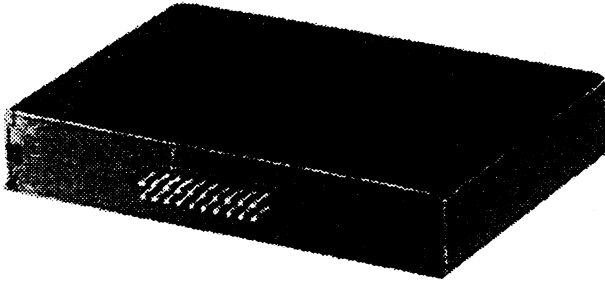


Module DOP-CP For DT-5TG

Instruction Manual



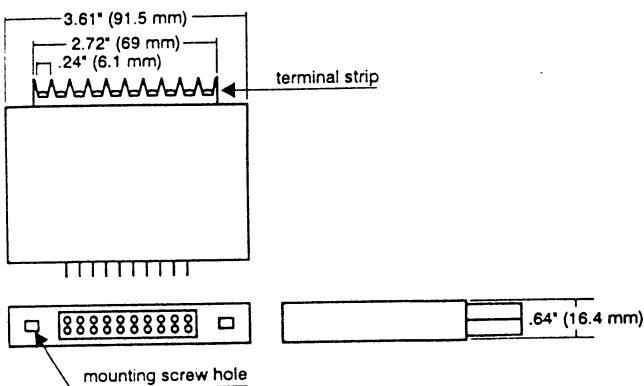
Features

The Shimpo DOP-CP is a triple relay output module that is designed to work with the DT-5TG panel mount tachometer. Contained in this module are three SPST relays that work in conjunction with the display functions "HI", "GO" and "LO". Also featured is a current sinking transistor which is activated when the sensing speed reaches zero. These four outputs can be interfaced to a variety of circuits for monitoring or controlling the rate being measured.

Operational Precautions

1. If the unit is going to be used in a caustic environment it is suggested that a NEMA 4X enclosure be used.
2. If possible keep the unit free from vibration and shock.
3. When installing the unit, keep the power and sensor wires separate.
4. After inserting wires, tighten the terminal screws securely.

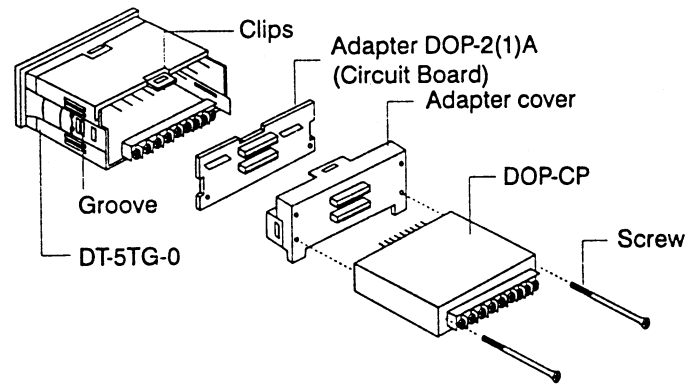
Dimensions



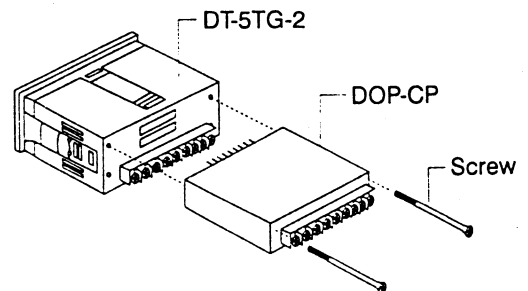
Installation

Turn power off on DT-5TG

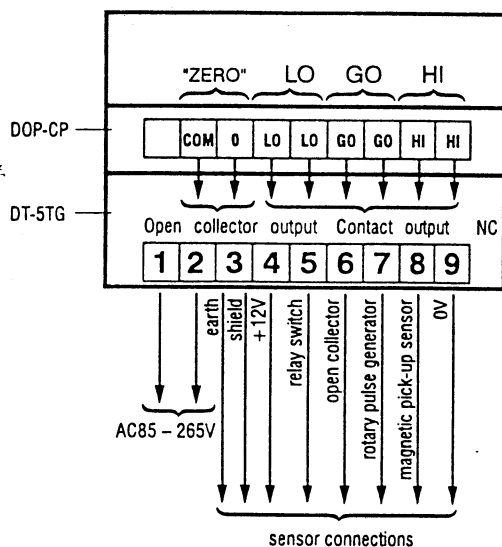
Before mounting this module, make sure the DT-5TG has a suffix of 1 or 2. If you have a DT-5TG-0 you must purchase a DOP-1A (one interface connector) or a DOP-2A (two interface connector) before proceeding.



When mounting the module to the DT-5TG-1, carefully insert the connecting pins and align the plastic pins so the module fits flush against the main body case. Secure the module with the two mounting screws provided. When mounting to the DT-5TG-2, either the top or bottom connector can be used. If the top connector used, mount the module so the label is on top. If the bottom connector is used, mount the module so the label is on the bottom.



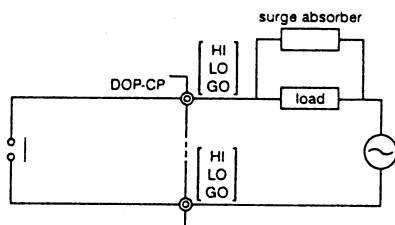
Connections



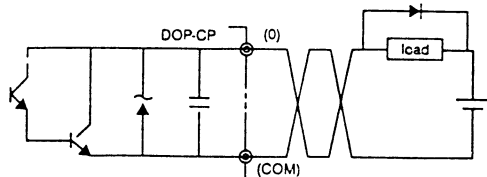
Measuring Value	Output Signal
>HI	"HI" output
<HI and \geq LO	"GO" output
<LO	"LO" output
0	"ZERO" output

All DOP-CP contact terminals are cold and are labeled according to their respective functions. Be careful not to exceed the current and voltage capacities of these outputs. The "zero" terminals can sink a current up to 30mA at 30VDC.

Relay Output 250 VAC (1A max.)

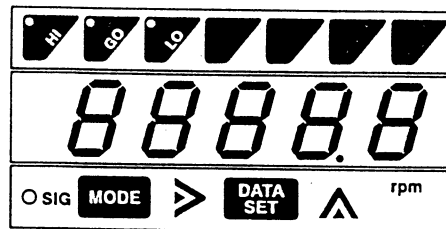


Open Collector Output 30 VDC (30mA max.)



Setting Display Functions

The DT-5TG has three comparison functions that are located above the display. Each function has an LED that is used as an aid during programming and a comparison indicator during monitoring.



HI – To program, press HI and MODE keys together until the LED lights (a minimum of 1 second). Use the increment and shift keys to set the limit. Press DATA SET key when programming is completed. When monitoring, if the display is greater than the HI limit setting, the HI LED will light and the HI contact will close.

GO – When monitoring, if the display is equal to or between the limit settings the GO LED will light and the GO contact will close.

LO – To program, press LO and MODE keys together until the LED lights (a minimum of 1 second). Use the increment and shift keys to set the limit. Press DATA SET key when programming is completed. When monitoring, if the display is less than the LO limit setting, the LO LED will light and the LO contact will close.

Note: If HI and LO are set at 0, no HI or LO or GO signal will be generated.

Explanation of Error Codes

Display	EE-01
Remarks	Hi set < Lo set
Solution	Press DATA SET key and reset HI set to > LO set

Specifications

Relay Contact Capacity	250VAC 1A Max.
Max. Current Sink Output	30VDC 30mA
Operating Temperature	0° C to 45° C
Storage Temperature	-10° C to 60° C